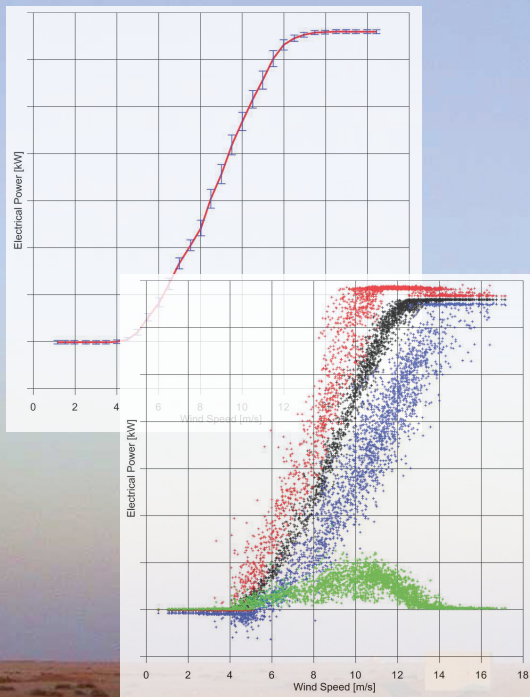


Accredited power curve verifications

The actual power curve - nothing more, nothing less



Power curve verification, Zafarana II, Egypt 60MW

The calculated annual energy production (AEP) of a specific planned project is the result of the measured wind conditions at the site and the power curve warranted by the wind turbine manufacturer. The warranted power curve is thus the starting point for selecting a specific turbine and is a central parameter in determining the economy of the project. An accredited measurement of the power curve after installation of the project proves whether or not the turbine conforms to the warranty issued by the turbine manufacturer. The actual power curve - nothing more, nothing less. COWI is through the fully owned subsidiary

Tripod Wind Energy accredited to conduct power curve verifications worldwide. We have conducted more than 60 accredited power curve measurements. In order to carry out accredited power curve measurements, it will at some sites be necessary to conduct a site calibration before installation of the turbines. We are also accredited to make site calibrations and have conducted such in numerous countries.

Contact

Marc Normann
Head of Department Wind Energy
Tel.: +45 23 38 38 91
mano@cowi.com



DANAK, Danish Accreditation — a member of EA, the European cooperation for Accreditation — has accredited Tripod Wind Energy ApS to carry out power curve measurements and site calibration worldwide.



Tripod Wind Energy measures power curves according to IEC 61400-12-1 Wind Turbine Power Performance Testing and MEASNET Power Performance Measurement Procedure version 5.

0232-1988-001e-11a